



ApneaLink™ Air

Home Sleep Testing Device



Home sleep testing made easy

ApneaLink™ Air provides the performance and reliability of our trusted ApneaLink products in a sleeker, easier to use device. With its one-touch operation and intuitive Start/Stop button, it's never been easier for patients to set up and use successfully. And the test complete indicator helps minimize wasteful retesting and increase patient satisfaction.



ApneaLink Air: Our most advanced home sleep testing solution

With its stylish design, ApneaLink Air provides performance and reliability in a compact, lightweight and easy-to-use home sleep testing (HST) device. A low-cost, type III HST device, the ApneaLink Air is capable of recording up to five channels of information: respiratory effort, pulse, oxygen saturation, nasal flow and snoring. It also features longer recording time and increased storage capacity over previous ApneaLink products.



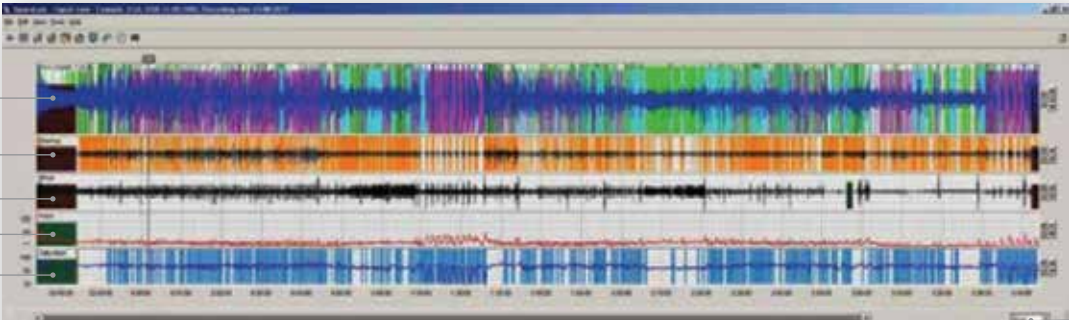
Access to detailed signals overnight

ApneaLink Air software provides clinicians access to a more in-depth view of their patients' recordings.

Full night view

Signals (Selectable):

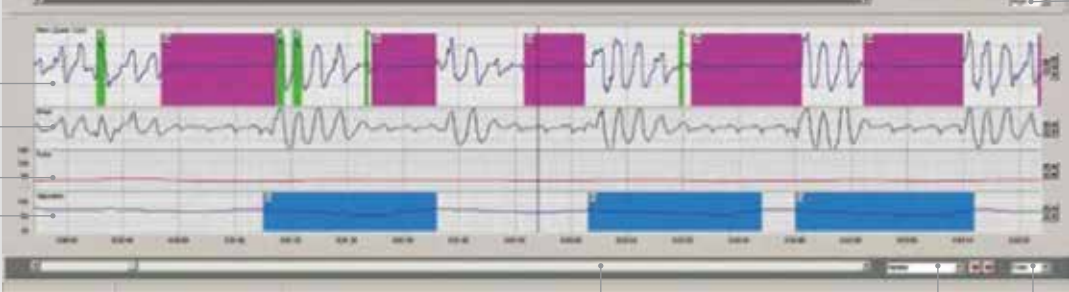
- Nasal flow
- Snore
- Respiratory effort
- Pulse
- Oxygen saturation



Expanded view

Signals (Selectable):

- Nasal flow
- Respiratory effort
- Pulse
- Oxygen saturation



All signals with adjustable amplitude

Time select bar

Event type selection

Selectable time

Selectable time

ApneaLink Air benefits

- **Improved usability** for both patients and healthcare professionals with:
 - One-touch operation with an intuitive Start/Stop button
 - Longer recording time (~12 hours) and increased storage capacity (~48 hours)
 - Test complete light provides feedback on recording time to users
 - Good signal indicators to help successful set ups
- **Reliable automatic analysis**
 - Includes apnea-hypopnea index (AHI), hypopnea index (HI), flow limitation, snoring and oxygen desaturation index (ODI)
 - Manual scoring possibility for more detailed patient data
 - Configurable analysis parameters allow adjustment of thresholds
- **Validated results meet AASM and CMS definitions** for hypopnea scoring guidelines
- **Cheyne-Stokes probability detection** helps determine when to refer patients for further in-lab diagnosis
- **Differentiation between obstructive and central apneas**
- **Printable patient instructions** when programming the device
- **Flexible report options**
 - **Email summary and signal reports** to send to referral physicians or other relevant parties
 - **Extended report** contains additional overview of respiratory data
 - **Prescription page** streamlines process for healthcare professionals

ApneaLink Air Complete Kit



Comprehensive reporting

ApneaLink Air automatically analyzes and derives AHI, flow limitation and snoring and later automatically generates a simple, easy-to-interpret report with a color-keyed AHI or Risk Indicator for the clinician to review.

ApneaLink - Report of 02/12/2013 15:15

Treating physician _____ **Referral to** _____

Patient data

First name:	<u>Cheyne Stokes</u>	Patient ID:	_____
Last Name:	<u>Example</u>	DOB:	<u>01/12/1958</u>
Street:	_____	Height:	<u>170.18 cm</u>
City, ST, Zip:	_____	Weight:	<u>92.41 kg</u>
Phone:	_____	BMI:	<u>31.9 kg/m²</u>

Recording

Date:	<u>21/01/2009</u>
Start:	<u>21:13</u>
End:	<u>05:56</u>
Duration:	<u>8 h 43 min</u>

Evaluation

Start:	<u>21:23</u>
End:	<u>05:54</u>
Duration:	<u>7 h 55 min</u>

AHI*

* See Clinical Guide for abbreviations and ResMed standard parameters

Analysis (Flow evaluation period: 7 h 55 min / SpO₂ evaluation period: 8 h 32 min)

Indices	Normal	Result
AHI*: <u>32.9</u>	< 5 / h	Average breaths per minute (bpm): 14.45
RI*: <u>33.8</u>	< 5	Breaths: 6857
Apnea index: 20.6	< 5 / h	Apneas: 163
UAI: 0		Unclassified apneas: 0 (0%)
OAI: 5.6		Obstructive apneas: 44 (27%)
CAI: 14.9		Central apneas: 118 (72%)
MAI: 0.1		Mixed apneas: 1 (1%)
Hypopnea index: 12.3	< 5 / h	Hypopneas: 97
% Flow lim. Br. without Sn (FL): 12	< Approx. 60	Flow lim. Br. without Sn (FL): 792
% Flow lim. Br. with Sn (FS): 0	< Approx. 40	Flow lim. Br. with Sn (FS): 3
		Snoring events: 66
ODI Oxygen Desaturation Index*: <u>33.5</u>	< 5 / h	No. of desaturations: 286
Average saturation: 91	94% - 98%	Saturation <= 90% : 234 min (46%)
Lowest desaturation: 72	-	Saturation <= 85% : 77 min (15%)
Lowest saturation: 72	90% - 98%	Saturation <= 80% : 7 min (1%)
Baseline Saturation: 98	%	
Minimum pulse: 59	> 40 bpm	
Maximum pulse: 71	< 90 bpm	
Average pulse: 62	bpm	
Proportion of probable CS epochs: 70	0%	CSR probable

Analysis status: Analyzed automatically

Analysis parameters used (Default)
 Apnea [20%; 10s; 80s; 1.0s; 20%; 60%; 8%]; Hypopnea [70%; 10s; 100s; 1.0s]; Snoring [8.0%; 0.3s; 3.5s; 0.5s]; Desaturation [4.0%]; CSR [0.50]

Comments

Ordering information and product codes

ApneaLink Air complete kit

- ApneaLink Air recorder device
- Software installation CD
- ApneaLink Air patient instructions
- USB download cable
- 1 reusable belt
- Oximeter reusable soft sensor (8000SM) – Medium
- XPOD LP oximeter
- XPOD LP oximeter clip
- 3 nasal cannulas
- Carry bag
- 2 AAA batteries

22354

EasySense™ Respiratory Effort Sensor

22321



Accessories

Oximeter components

XPOD LP oximeter	22374
XPOD LP oximeter clip	22371
NONIN 6000CA single use oximetry sensors – pk 24	22337
NONIN oximeter reusable soft sensor (8000SS) – Small	70567
NONIN oximeter reusable soft sensor (8000SM) – Medium	70568
NONIN oximeter reusable soft sensor (8000SL) – Large	70413

Nasal Cannulas

Nasal cannula – pk 25	70388
-----------------------	--------------

Other accessories

ApneaLink Air reusable belt	629052
ApneaLink Air carry bag	22373
ApneaLink Air software CD V10.1	22372
USB cable for ApneaLink Air	22375

For more information: **Accessories Guide**

Please contact your ResMed representative for more information.

ApneaLink Air Technical Specifications

Recorder

Enhanced hardware

EasySense respiratory effort sensor

Oximetry

Light indicators

- Test complete indicator
- Respiratory flow indicator
- Effort sensor connection indicator
- Oximetry connection indicator

Signal Recording

Respiratory effort

Respiratory flow

Snore

Blood oxygen saturation

Pulse

Battery voltage

Download application

PC download

Internal battery

AAA alkaline batteries

Internal memory

Recording period: 48 hours

Internal clock

Dimensions

Recorder: 62 x 102 x 30 mm (2.4" x 4" x 1.2")

Pulse oximeter: 53 x 20 x 15 mm (2.1" x 0.8" x 0.6")

Recorder weight: 66 g (2.3 oz)

